

CERTIFIED LAND CORNER RECORDATION

DESCRIPTION OF CORNER EVIDENCE FOUND, AND ORIGINAL RECORD (If known)

LOCATION Found a railroad spike, flush with paved road surface, origin unknown.
 S.12 S. 7
 S.13 S.18 A spike with tin, origin unknown, bears S 46°51'30" E, 1.78 foot distant.
 T.14N.
 R.64W. R.63W.G.L.O. record - (Not monumented) Witnessed by Limestone, 18" x 6th P.M. 14" x 4", 50 lks. N. and Limestone, 24" x 15" x 4", 50 lks. S.

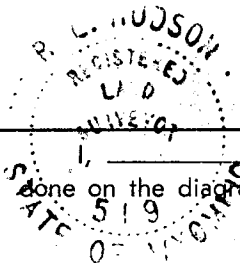
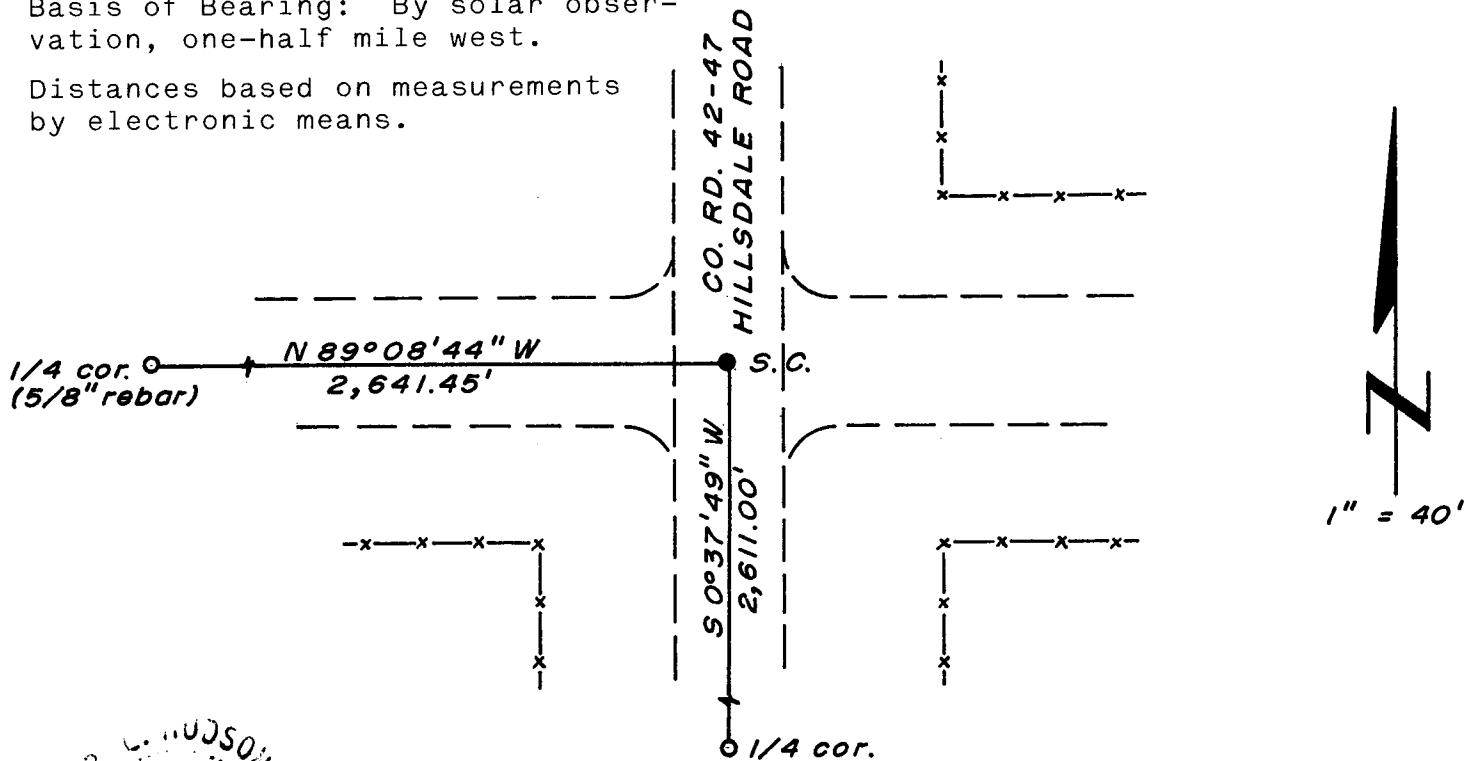
DESCRIPTION OF MONUMENT AND ACCESSORIES ESTABLISHED TO PERPETUATE THE ORIGINAL LOCATION OF THIS CORNER:

At the corner: No additional monumentation.
 Accessories: None set.

SKETCH, WITH COURSE AND DISTANCE TO ADJACENT CORNER IF DETERMINED IN THIS SURVEY.
 (May Sketch or Paste Reproduction on Reverse Side.)

Basis of Bearing: By solar observation, one-half mile west.

Distances based on measurements by electronic means.



I, R. L. Hudson certify that I have carefully performed ~~or reviewed~~ the work done on the diagrammed corner as reported on this recordation form and approve the same.

R. L. Hudson Wyoming L.S. No. 519
 Signature of Surveyor Registration No.

STATE OF WYOMING,
 Office of Clerk and Recorder,
 County of Taramie

534728

This "corner record" was filed for record on the 6 day of July, 1977, was noted on the cross-index plat and is assigned page No. _____, in book No. _____.

Janet C. Whitehead
 County Official

Cross Index No. <u>J-1</u>	T. <u>14</u>	R. <u>63</u>	Mer.
<u>J-25</u>	T. <u>14</u>	R. <u>64</u>	Mer.
_____	T. _____	R. _____	Mer.
_____	T. _____	R. _____	Mer.
_____	T. _____	R. _____	Mer.
_____	T. _____	R. _____	Mer.

J-25 14-64